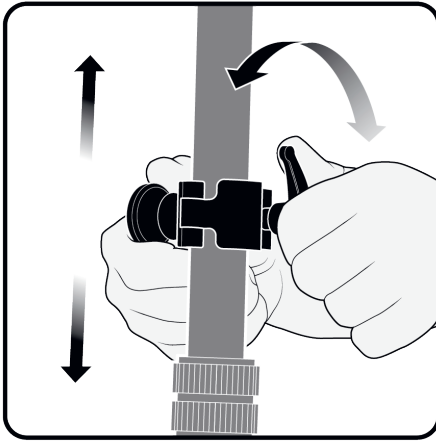


EasyTilt MANUAL

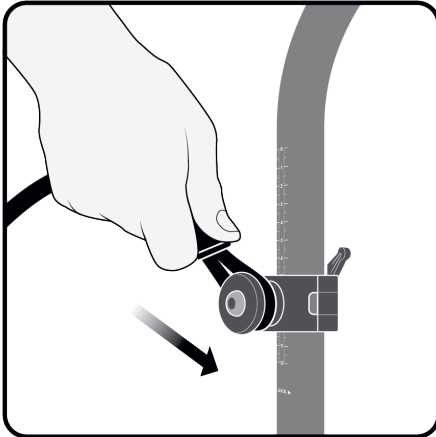
1



Lock the spindels on the frame (30mm) of the gimbal by turning the lever clockwise. Make sure to mount it on the center of gravity.

For 25mm frames, Press in the inserts in the designated holes before attaching.

2



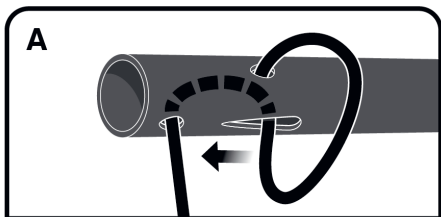
Align the loop over the dedicated track on the spindle and fasten it by pressing the sealing ring forward. Balance the gimbal by turning the spindle forward or backwards

3

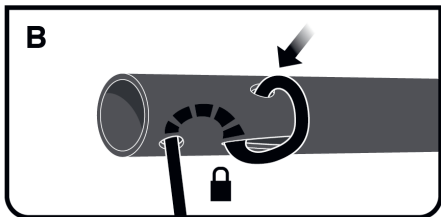


Adjust the ropes. You want to be able to tilt the gimbal without the top handle, monitor or batteries touching the EasyTilt.

4

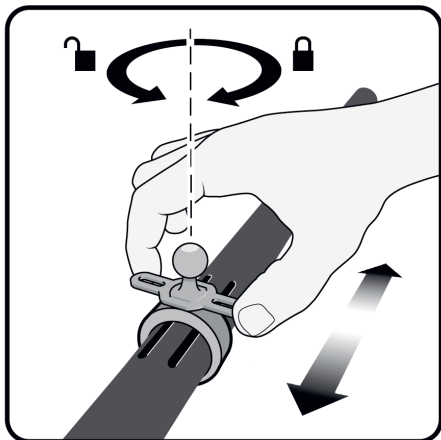


A. Fasten the ropes by pressing them into the declining track of the EasyTilt.



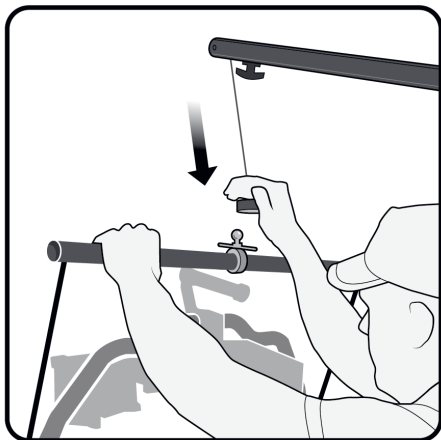
B. You can “hide” the excess rope by pressing the rope through the round hole.

5



To adjust the ring side-to-side, you can release the ring by turning the lever counter clockwise. To get it centered on the EasyTilt fasten it between the two tracks.

6



Fasten your Easyrig onto the EasyTilt by using the ball stud with our Quick Release or simply slide the ring to the side and use our standard camera hook. You are now ready to shoot!