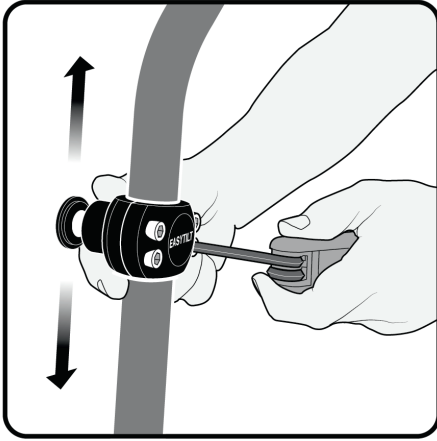


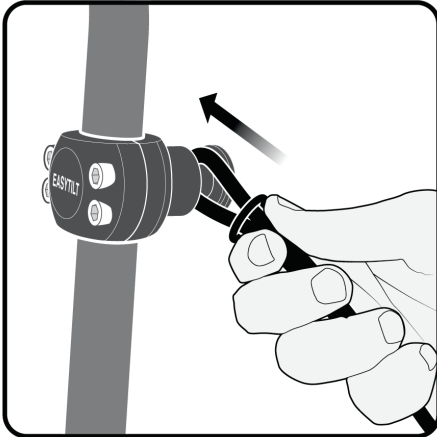
EasyTilt MANUAL

1



Mount the Spindles on the frame of the gimbal by using an allen key (5mm). Make sure not to mount it where you comfortably can hold the gimbal.

2



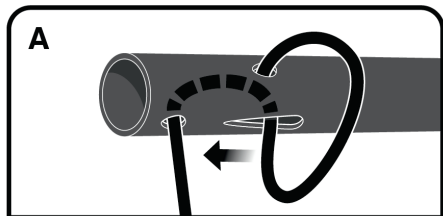
Align the loop over the dedicated track of the spindle link and fasten it by pressing the sealing ring forward.

3

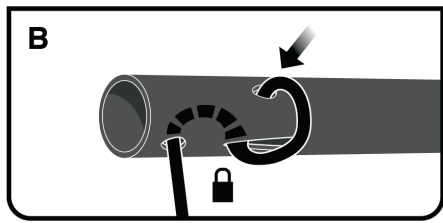


Adjust the ropes. You want to be able to tilt the gimbal without the battery or top handle touching the EasyTilt.

4

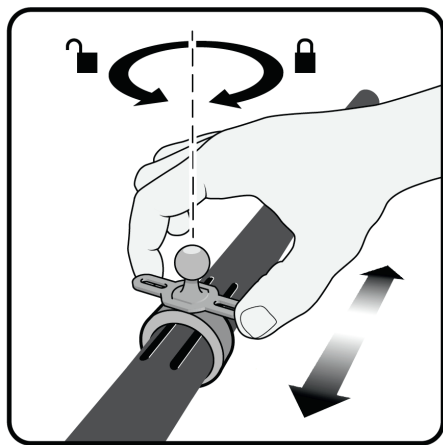


A. Fasten the ropes by pressing them into the declining track of the EasyTilt.



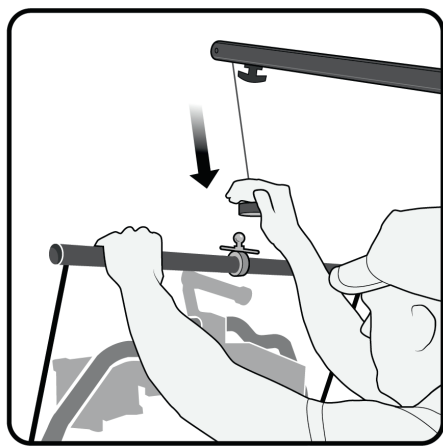
B. You can "hide" the excess rope by pressing the rope through the round hole.

5



To adjust the ring side-to-side, you can release the ring by turning the lever counter clockwise. To get it centered on the EasyTilt fasten it between the two tracks.

6



Fasten your Easyrig onto the EasyTilt by using the ball stud with our Quick Release or simply slide the ring to the side and use our standard camera hook. You are now ready to shoot!